

Search of X-ray emission from roAp stars: The case of γ Equulei (Research Note)

B. Stelzer¹, C.A. Hummel², M. Schöller², S. Hubrig³, and C. Cowley⁴

¹ INAF - Osservatorio Astronomico di Palermo, Piazza del Parlamento 1, I-90134 Palermo, Italy

e-mail: B. Stelzer, stelzer@astropa.inaf.it

² European Southern Observatory, Karl-Schwarzschild-Strasse 2, D-85748 Garching, Germany

³ Astrophysikalisches Institut Potsdam, An der Sternwarte 16, D-14482 Potsdam, Germany

⁴ Department of Astronomy, University of Michigan, Ann Arbor, MI 48109-1042, U.S.A.

Received <06-12-2010> / Accepted <24-02-2011>

ABSTRACT

Context. Rapidly oscillating Ap (roAp) stars represent a subclass of magnetic, chemically peculiar stars. The explanation for their pulsations includes suppressed convection due to the strong magnetic field. These stars rotate slowly such that a solar-like dynamo and ensuing magnetic activity is unlikely to be present. On the other hand, magnetic activity could provide the particle acceleration suspected to be responsible for the presence of short-lived radionuclides on some roAp stars.

Aims. The detection of X-ray emission from Ap stars can be an indicator for the presence of magnetic activity and dynamo action, provided different origins for the emission, such as wind shocks and close late-type companions, can be excluded. Here we report on results for γ Equ, the only roAp star for which an X-ray detection is reported in ROSAT catalogs.

Methods. We use high resolution imaging in X-rays with Chandra and in the near-infrared with NACO/VLT that allow us to spatially resolve companions down to $\leq 1''$ and $\sim 0.06''$ separations, respectively.

Results. The bulk of the X-ray emission is associated with a companion of γ Equ identified in our NACO image. Assuming coevality with the primary roAp star (~ 900 Myr), the available photometry for the companion points at a K-type star with $\sim 0.6 M_{\odot}$. Its X-ray properties are in agreement with the predictions for its age and mass. An excess of photons with respect to the expected background and contribution from the nearby companion is observed near the optical position of γ Equ. We estimate an X-ray luminosity of $\log L_x [\text{erg/s}] = 26.6$ and $\log (L_x/L_{\text{bol}}) = -7.9$ for this emission. A small offset between the optical and the X-ray image leaves some doubt on its association with the roAp star.

Conclusions. The faint X-ray emission that we tentatively ascribe to the roAp star is difficult to explain as a solar-like stellar corona due to its very low L_x/L_{bol} level and the very long rotation period of γ Equ. It could be produced in magnetically confined wind shocks implying a mass loss rate of $\sim 10^{-14} M_{\odot}/\text{yr}$ or from an additional unknown late-type companion at separation $\leq 0.4''$. If confirmed by future deeper X-ray observations this emission could point at the origin for the presence of radioactive elements on some roAp stars.

Key words. X-rays: stars – stars: chemically peculiar – stars: activity – stars: binaries: close – stars: individual: γ Equ

1. Introduction

Solar-like stellar magnetic activity relies on rotation and the presence of a convection zone. According to interior models based on mixing-length theory the transition from radiative to convective envelope takes place near $T_{\text{eff}} \sim 8300$ K (e.g. Christensen-Dalsgaard 2000). This is in rough accordance with X-ray and UV observations, which place the onset of significant chromospheric and coronal emission somewhere between spectral type A7 and F4 (Schmitt et al. 1985; Simon et al. 1994; Schmitt 1997). However, as a consequence of the low spatial resolution of the early-day X-ray instruments, the contaminating X-ray emission from a possible (or known) low-mass binary companion has always been a problem in confirming intermediate-mass stars as intrinsic X-ray sources (e.g. Drake et al. 1994).

Up to 20% of A and B main-sequence (MS) stars are ‘chemically peculiar’ (CP) stars. These stars show enhanced lines of some elements in their spectra which are ascribed to atmospheric abundance anomalies. A sub-group of the CP stars possess strong predominantly dipolar magnetic fields (Borra et al.

1982). It is unclear if these fields are fossil relics of the star formation process or if they have a dynamo origin.

The rapidly oscillating Ap stars (roAp stars; Kurtz 1982) hold special promise for elucidating the potential of dynamos and ensuing magnetic activity within the CP class: The roAp stars have a photometrically and spectroscopically estimated temperature range from 8400 K down to 6800 K corresponding to spectral types A5 to F2. A shallow convective layer is expected to be present. However, these stars have large-scale organized magnetic fields, and suppression of convection by the magnetic field has been invoked to explain the mechanism of the excitation of their pulsations (Balmforth et al. 2001). Consistent with the expected weakness of convection, no evidence for chromospheres have been found so far (Shore et al. 1987; Seggewiss 1990). On the other hand, the possible detection of Pm II lines with short half-life may be explained by flaring activity (Fivet et al. 2007). None of the roAp stars is a spectroscopic binary (Hubrig et al. 2000) facilitating the interpretation of eventually detected signs of activity.

X-ray emission is one of the most efficient indicators of magnetic activity. In this paper we present the results from a *Chandra*

observation of the roAp star γ Equ, the slowest rotator of the CP class and, thus, the least likely to exhibit activity generated by a rotation-dependent dynamo. We introduce the target in Sect. 2. In Sects. 3 and 4 we provide the findings from our investigation of the nature of our target. The X-ray observations and their results are described in Sect. 5. A synthesis and our conclusions are given in Sect. 6.

2. The target, γ Equ

What made us suspicious of magnetic activity on γ Equ is the detection of a nearby X-ray source the *ROSAT* Faint Star Catalogue (FSC). The offset between the FSC X-ray position and the optical position of γ Equ is $28.1''$, i.e. at the limit of the *ROSAT* error box. γ Equ shows no signs for radial velocity variability due to orbital motion, and thus it has no spectroscopic companions (Hubrig et al. 2000). However, it is known to be a close visual binary (see Sect. 3) that can be resolved in X-rays only with *Chandra*.

Measurements of the longitudinal magnetic field of γ Equ over nearly six decades show a clear sinusoidal pattern for which Bychkov et al. (2006) derived a period of 91.3 ± 3.6 yrs. Rotational modulation of an inclined dipole is the most widely favored scenario for explaining this presumably cyclic variability, implying extremely slow rotation for γ Equ, and indeed making it the slowest rotator among all magnetic CP stars.

For our study we adopt the fundamental parameters of γ Equ from Hubrig et al. (2007): $\log T_{\text{eff}} [\text{K}] = 3.882 \pm 0.017$ and $\log (L/L_{\odot}) = 1.144 \pm 0.049$ with the *Hipparcos* parallax 28.38 ± 0.90 mas (Perryman et al. 1997). We note that the stellar parameters derived by Perraut et al. (2011) combining interferometric measurements of the star’s angular diameter with modeling of the spectral energy distribution are compatible within the error bars with those given by Hubrig et al. (2007). Hubrig et al. (2007) have estimated the mass and age of γ Equ interpolating the solar-abundance Schaller et al. (1992) tracks. In this paper we resort to the MS evolutionary calculations of Pietrinferni et al. (2004). These models have the advantage of covering a wide range of masses, $0.5 \dots 10 M_{\odot}$, such that they can be applied to both γ Equ and its fainter visual companion (see Sect. 3). Isochrones and tracks of these models can be downloaded from the BaSTI database¹ for various sets of parameters. We use the standard solar model with initial He abundance of $Y = 0.273$ and metallicity $Z = 0.0198$. For stars with mass above $1.1 M_{\odot}$ overshooting from the convective core is taken into account in these calculations. Interpolating these models we find for γ Equ a mass of $1.81 \pm 0.04 M_{\odot}$ and an age of 0.88 ± 0.17 Gyr. The uncertainties on the mass and age are derived considering the uncertainties of T_{eff} and L_{bol} given by Hubrig et al. (2007). Our results are consistent with the mass and age obtained by Hubrig et al. (2007).

3. The nature of the companion

The Washington Double Star Catalogue (henceforth WDS; Mason et al. 2001) lists three companions for γ Equ. The closest companion was also detected in recent adaptive optics imaging with NACO at the VLT (Schöller et al., in prep.) at a separation of $a = 0.826'' \pm 0.003''$ and position angle of $\theta = 256.8^{\circ} \pm 0.5^{\circ}$; see Fig. 1 (left). Schöller et al. estimate $K = 4.09 \pm 0.26$ mag for the primary and $K = 6.80 \pm 0.29$ mag for the secondary.

¹ The *Bag of Stellar Tracks and Isochrones* database is accessible at <http://albione.oa-teramo.inaf.it/>

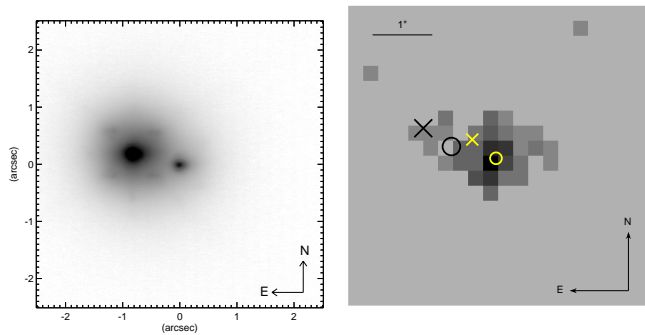


Fig. 1. [left] NACO K -band image centered on γ Equ B. [right] X-ray image in $0.3 - 8.0$ keV with $0.25''$ pixel size. The position of the X-ray source is highlighted with a yellow (small) circle. Positions indicated by x-shaped symbols denote the proper motion corrected *Hipparcos* position of γ Equ A at the time of the *Chandra* observation (black) and the corresponding expected position of the companion according to the orbit solution (yellow and smaller). The expected position of the primary, γ Equ A, as inferred from the orbit solution for the assumption that the companion is located at the X-ray position, is shown as black (larger) circle.

To constrain the nature of the companion we searched for further information in the literature. We extracted optical photometry from the Tycho catalog (ESA 1997): $B_{\text{T}} = 9.85 \pm 0.03$ mag and $V_{\text{T}} = 8.69 \pm 0.02$. These values can be converted to the Johnson system using the transformations given in the Introduction to the *Hipparcos* and Tycho Catalogues. We assume coequality with γ Equ A, i.e. an age of ~ 0.88 Gyr, in order to derive the stellar parameters from the evolutionary models. Pietrinferni et al. (2004) provide $B - V$ colors for each grid point in their calculations. For our measured $(B - V)_{\text{J}} = 0.99 \pm 0.03$ we obtain a mass of $0.8 M_{\odot}$, a luminosity of $\log (L/L_{\odot}) = -0.6$, and an effective temperature $\log T_{\text{eff}} [\text{K}] = 3.68$. According to Kenyon & Hartmann (1995) this temperature corresponds to a spectral type of K2.5 V.

4. A preliminary orbit solution

We combined our NACO measurement of γ Equ with data from the WDS catalog² (WDS coordinates $21103 + 1008$) and from *Hipparcos* to derive the preliminary orbit of γ Equ AB shown in Fig. 2. The measurements listed in the WDS cover the years between 1867 and 1994. Uncertainties on the WDS astrometry were estimated based on the scatter of separation ($0.160''$) and position angle (2.4°) relative to quadratic polynomial fits of these quantities versus time. The resulting reduced χ^2 of the orbital fit is 1.8, and preliminary orbital elements with their formal uncertainties are given in Table 1. Using the *Hipparcos* parallax, we derive a total mass for the system γ Equ AB of $2.4 \pm 0.4 M_{\odot}$. With the primary mass given from the HR diagram, the mass of component B is estimated to be $0.6 \pm 0.4 M_{\odot}$ consistent with its photometry.

Given the large uncertainties of the astrometric data points, we do not put emphasis on the mass derived from the orbit. The orbit solution is, however, useful to predict the position of the secondary relative to the primary at the epoch of the X-ray observations, shown in Figs. 1 and 2 and in Table 2.

² http://ad.usno.navy.mil/wds/data_request.html

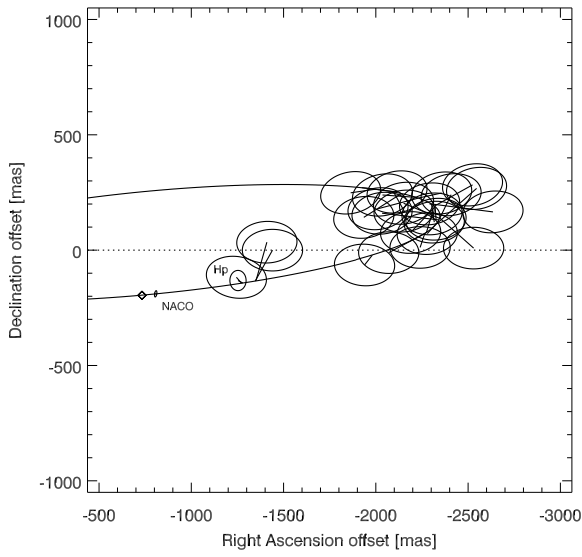


Fig. 2. Apparent orbit of γ Equ AB. The position of the primary is off to the left outside the displayed portion of the orbit. The NACO measurement uncertainty ellipse is enlarged by a factor of 2 for clarity. The *Hipparcos* measurement is labeled ‘Hp’. A diamond marks the expected position of the companion at the date of the *Chandra* observations.

Table 1. Preliminary orbit for γ Equ AB (see Fig. 2).

Element	Unit	Value
a	[mas]	1600 ± 100
e		0.56 ± 0.05
i	[$^\circ$]	99.2 ± 3.0
ω	[$^\circ$]	196.2 ± 4.0
Ω	[$^\circ$]	95.0 ± 3.0
P	[yrs]	274.5 ± 0.8
T_0	[JD]	2475667 ± 1000

5. X-ray observations

γ Equ was observed under Obs-ID 9910 for 10ksec with *Chandra* using the Advanced CCD Imaging Spectrometer (ACIS-I). The data analysis was performed with the CIAO software package³ version 4.2. We have applied standard filtering to the event file and applied the good time interval file. We checked that there are no cosmic ray afterglows in the image around the position of γ Equ. Source detection was carried out with the WAVDETECT algorithm (Freeman et al. 2002) using an image with spatial resolution of $0.25''/\text{pixel}$ and a congruent, monochromatic exposure map for 1.5 keV.

5.1. X-ray image

A zoom into the X-ray image for the $5'' \times 5''$ around γ Equ is shown in Fig. 1 (right). The proper motion corrected *Hipparcos* position of the roAp star is marked with a large black x-point. The only X-ray source detected in the vicinity of γ Equ A (marked with a small yellow circle in Fig. 1) is located $1.31''$ to the south-west ($\theta = 247.6^\circ$). The position angle is roughly

³ CIAO is made available by the CXC and can be downloaded from <http://cxc.harvard.edu/ciao/download/>

Table 2. Separation between γ Equ A and B measured with different instruments at different epochs and corresponding predictions from orbit.

Instrument	Date [yyyy/mm/dd]	Measured [$''$]	Orbit solution [$''$]
<i>Hipparcos</i>	1991/04/02	1.26 ± 0.04	1.29
NACO	2007/06/15	0.826 ± 0.003	0.82
<i>Chandra</i>	2009/07/13	$1.3 \pm 0.6^\dagger$	0.76

[†] This measurement relies on the identification of γ Equ B with the X-ray source; error estimate corresponds to formal accuracy of ACIS-I astrometry.

coincident with the direction of the companion γ Equ B. Table 2 summarizes the separations between γ Equ A and the companion measured with *Hipparcos*, NACO and *Chandra*, and compares them to the separation expected from the orbit solution. The expected position of the companion at the time of the *Chandra* observation with respect to the proper motion corrected *Hipparcos* position of γ Equ A according to the orbit solution is marked with a small yellow x-point in Fig. 1. Given the difference in the separation between the expected position of γ Equ B and the X-ray source it is appropriate to consider the astrometry.

The positional accuracy of ACIS-I is $\sim 0.6''$ at 90% confidence. We have performed source detection on the full *Chandra* image (ACIS-0123) with the aim to better constrain the astrometry of the X-ray coordinates by cross-correlation with optical and infrared (IR) catalogs. However, only few of the 26 X-ray sources detected across the ACIS-I image have known counterparts at other wavelengths, and all of them are either very weak (< 10 counts) or at large off-axis angle. No systematic offset between optical/IR and X-ray coordinates can be deduced. The adaptive optics image of the VLT does not allow for absolute astrometry and there are no other objects in the NACO field to which we could tie γ Equ.

In the following we assume that γ Equ B coincides with the X-ray source position. This seems a reasonable hypothesis, given the fact that the accuracy of the absolute X-ray position may be uncertain by up to two pixels in Fig. 1, while the *Hipparcos* positional accuracy (~ 1 mas) and proper motion accuracy ($1 - 2$ mas/yr) are superb. Shifting the image accordingly, the position of the primary, γ Equ A, would then correspond to the large black circle in Fig. 1, using the separation and position angle from the orbit solution (Sect. 4).

It seems that there is an excess of photons over the average background emission near the position of the primary, that we shall tentatively call ‘Source 2’. This suggests that γ Equ A is a faint X-ray source. However, this emission seems to be separated by more than the expected $\sim 0.8''$ from the center of the brighter source associated with the secondary. The precise location of this emission can not be determined given its small separation from the secondary’s X-ray emission and the low photon statistics (4 counts; see below). As a test on the significance of ‘Source 2’ we computed the expected contribution from the wing of the point-spread-function of the X-ray source to the observed counts at the proper motion corrected *Hipparcos* position of γ Equ A. In a $0.5''$ radius around this position 1.41 counts are expected. The Poisson probability of finding the observed 4 photons in the same radius is 5%.

Table 3. XSPEC fit results for the X-ray source associated with γ Equ B. The free parameters of the one-temperature APEC model are column density (N_{H}), temperature (kT) and emission measure (EM). Uncertainties are 68 % confidence levels.

χ^2_{red} (dof)	$\log N_{\text{H}}$ [10^{22} cm^{-2}]	kT [keV]	$\log EM$ [cm^{-3}]
0.76 (12)	$0.0^{+0.44}_{-0.0}$	$0.52^{+0.62}_{-0.27}$	$51.2^{+52.0}_{-51.0}$

5.2. X-ray properties of the γ Equ binary

When examining the properties of the X-ray source associated with the companion we consider only photons within a $0.75''$ radius, to avoid the (small) contribution from ‘Source 2’. There are 89 counts in this photon extraction region. No evidence for flaring is present.

An individual response matrix and auxiliary response were extracted using standard CIAO tools. The background of ACIS is negligibly low. We fitted the spectrum, rebinned to a minimum of 5 counts per bin, in the XSPEC 12.6.0 environment with a one-temperature thermal model subject to absorption ($\text{WABS} \cdot \text{APEC}$) for a range of initial values for temperature and column density. The elemental abundances relative to hydrogen are adopted from Wilms et al. (2000) and are globally tied to $Z = 0.3 Z_{\odot}$, such that the free parameters of this model are temperature (kT), emission measure (EM) and column density (N_{H}).

The best fit parameters are given in Table 3 together with uncertainties for a 68 % confidence level. As expected for a nearby star without circumstellar matter, the best fit has no absorption. The spectrum is formally also compatible with an absorbed plasma of nearly one dex higher emission measure (see Table 3). However, this solution goes along with quite low temperature and we consider it unlikely. The luminosity in the $0.3 - 8.0$ keV band is $\log L_{\text{x}} [\text{erg/s}] = 28.06$, where we have corrected for the flux in the PSF wings that were missed because of our limitation of the photon extraction radius.

For the *ROSAT* FSC source (0.020 ± 0.008 cts/s) we derive with PIMMS⁴ a similar X-ray luminosity of $\log L_{\text{x}} [\text{erg/s}] = 28.3$. For this estimate that refers to the $0.12 - 2.48$ keV band we have assumed a Raymond-Smith spectrum with the temperature derived from the *Chandra* data.

The total of only four photons ascribed to ‘Source 2’ prohibits any firm conclusions on its X-ray properties. The photon energies are 0.7, 0.9, 1.2 and 1.8 keV, suggesting spectral hardness similar to that of the emission associated with γ Equ B. From the arrival time distribution of the photons we do not infer evidence for flaring. Assuming the same X-ray temperature as for γ Equ B we obtain with PIMMS a luminosity of $\log L_{\text{x}} [\text{erg/s}] = 26.6$.

6. Discussion and conclusions

The atmospheres of the roAp stars can be termed pathological. Cowley et al. (2004) and Fivet et al. (2007) called attention to the possible presence of unstable elements (Tc and Pm) in some roAp stars. The longest-lived Pm isotope has a half-life of only 17.7 years. Accelerated particles may lead to nucleosynthesis of short-lived elements on the surface of Ap stars (Goriely 2007). It is a well-known fact that charged particles are accelerated during stellar and solar flares (Hudson & Ryan 1995). These par-

ticles thermalize their energy, giving rise to high-energy X-ray and γ -ray emission. While the latter has remained undetectable on stars other than the Sun, part if not all of the X-ray emission from magnetically active stars is usually attributed to such flare events. Therefore, it is not implausible to attribute the presence of isotopes with short half-lifetime in roAp stars to flare activity. The detection or failure to find X-rays from these stars may, therefore, provide critical information on the state of the plasma in their atmospheres.

Our search of several X-ray catalogues for X-ray sources coinciding with a roAp star, brought forth only one object, γ Equ. We have now shown in a dedicated *Chandra* observation that the bulk of this X-ray emission must be ascribed to a late-type companion. The photometry of this object points to an early-K spectral type, assuming coequality with γ Equ A. The physical pairing with the primary is corroborated by clear evidence for orbital motion. The X-ray luminosity ($\log L_{\text{x}} = 28.1$), X-ray temperature ($kT = 0.5$ keV) and fractional X-ray luminosity [$\log (L_{\text{x}}/L_{\text{bol}}) = -5$] are in accordance with the expectation for the age and spectral type of γ Equ B; cf. Preibisch & Feigelson (2005); Schmitt et al. (1990).

More important is the possible identification of faint X-ray emission from the roAp star. The enhanced number of photons to the north-east of the secondary has low probability to be a statistical fluctuation but its association with γ Equ A could not be established with certainty due to uncertain astrometry. If this faint emission is attributed to γ Equ A, its fractional X-ray luminosity is extremely low, $\log (L_{\text{x}}/L_{\text{bol}}) = -7.9$.

The mass and age of γ Equ A are similar to the normal, i.e. non-peculiar, A-type star Altair shown by Robrade & Schmitt (2009) to be an X-ray emitter with $\log (L_{\text{x}}/L_{\text{bol}}) = -7.4$. Contrary to γ Equ A, Altair is a fast rotator and its X-ray properties are ascribed to compact structures at low latitudes, i.e. its X-ray emission can reasonably be explained by a weak solar-like corona. The extremely long period derived from the magnetic field variations for γ Equ A makes such an interpretation difficult as it translates to extreme values for the Rossby number ($R_0 = \tau_{\text{conv}}/P_{\text{rot}}$) that have never been investigated. Extrapolation of the empirical relation between X-ray emission and rotation rate for MS stars of masses $< 1.3 M_{\odot}$ (Pizzolato et al. 2003), if valid for stars of the mass of γ Equ A, would predict several orders of magnitude fainter X-ray luminosity than inferred from the detection of 4 counts in our *Chandra* observation. Therefore, for γ Equ A, either the magnetic period is not identical with the rotation period or the X-ray emission mechanism is not due to a solar-like dynamo on the roAp star.

While residual dynamo activity connected to a (shallow) convection zone is the only viable mechanism for intrinsic X-ray production in normal intermediate-mass stars, magnetically confined wind-shocks (MCWS) provide an alternative in the case of Ap stars. MCWS have been invoked as explanation for the X-ray emission from the Ap star IQ Aur (Babel & Montmerle 1997). The X-ray luminosity of IQ Aur ($\log L_{\text{x}} = 29.6$) is about 1000 times higher than that of γ Equ A (see Sect. 5.2). According to Babel & Montmerle (1997) for the MCWS model L_{x} scales with the magnetic field strength (B_*), the mass loss rate (\dot{M}_{W}) and the terminal wind velocity (v_{∞}) as

$$L_{\text{x}} \simeq 2.6 \cdot 10^{30} \text{ erg/s} \cdot \left(\frac{B_*}{1 \text{ kG}} \right)^{0.4} \xi \quad (1)$$

and

$$\xi = \left(\frac{\dot{M}_{\text{W}}}{10^{-10} M_{\odot}/\text{yr}} \right)^{\delta} \left(\frac{v_{\infty}}{10^3 \text{ km/s}} \right)^{\epsilon} \quad (2)$$

⁴ The Portable Interactive Multi-Mission Simulator (PIMMS) is accessible at <http://asc.harvard.edu/toolkit/pimms.jsp>

with $\delta = 1$ and $\epsilon \approx 1 \dots 1.3$. In the case of γ Equ A, the value measured for the maximum longitudinal field is $B_{l,\max} \approx 1$ kG (Bychkov et al. 2006). According to Aurière et al. (2007), the surface field of a dipole is $B_s \geq 3.3B_{l,\max}$. We further assume $v_\infty \simeq 600$ km/s, the value derived for IQ Aur by Babel & Montmerle (1997). With these numbers the mass loss rate required to sustain the X-ray luminosity estimated from our observation is $2 \cdot 10^{-14} M_\odot/\text{yr}$. Michaud & Charland (1986) showed that the CP phenomenon appears only for $\dot{M}_W < 10^{-12} M_\odot/\text{yr}$ and that mass loss rates on magnetic Ap stars may, indeed, be as small as $10^{-15} M_\odot/\text{yr}$. If we further set for the velocity of the shock (v_{sh}) forming from the collision of the winds from the two hemispheres in the equatorial plane $v_{\text{sh}} \simeq v_\infty$, the strong shock condition implies a shock temperature of ≈ 0.35 keV. As argued in Sect. 5.2 the energies of the four photons from ‘Source 2’ hint at a similar spectral temperature as measured for γ Equ B, 0.52 keV, which is roughly consistent with the above estimate. Clearly, these order of magnitude estimates that rely on a reasonable guess and approximations for some parameters can serve as an argument for plausibility of the MCWS scenario on γ Equ A but do not demonstrate its actual presence on this star.

An alternative explanation for the X-ray photons that we ascribed to γ Equ A would be an additional unseen companion. Such an object would also solve the problem of the discrepancy between the separations of γ Equ AB measured in the near-IR from the NACO image on the one hand and in the X-ray image (γ Equ B vs. ‘Source 2’) on the other hand; see Fig. 1. This close companion would have to have a separation of only $\sim 0.4''$ from γ Equ A. At this separation 90 % completeness is reached in the NACO image for companions with a flux of at least 1 % of the primary (Fig. 4 of Schöller et al. (2010)), i.e. any such hidden companion in our case would likely be fainter than $K \sim 9$ mag because it escaped detection with NACO.

Clearly, the possible detection of X-ray emission from the roAp star γ Equ A based on 4 photons needs to be corroborated by future deeper observations. If confirmed, the X-ray emission may be a diagnostic for the energetic events that are believed to be at the origin of the production of unstable elements on some roAp stars. The fact that radioactive elements are not currently seen on γ Equ A itself does not exclude this scenario. The exotic elements may be concentrated in localized regions on the stellar surface which, as a consequence of its very slow rotation, may remain hidden to the observer for decades. Spots of rare-earth elements are well-established in the Ap star HR 465 (e.g. Cowley & Rice 1981; Rice 1988), for which the presence of Pm II has been suggested. HR 465 shares with γ Equ A the characteristic of a very long rotation period ($\sim 22 - 24$ yrs) but it is not a roAp star.

Acknowledgements. BS wishes to thank Loredana Prisinzano and Ettore Flaccomio for stimulating discussions. We would like to thank Serge Correia for contribution to the NACO data reduction. We appreciate the valuable feedback of the referee, M. Aurière. BS acknowledges financial support by ASI-INAF agreement I/009/10/0. We have used data and the software CIAO obtained from and provided by the *Chandra* X-ray Observatory Center, which is operated by the Smithsonian Astrophysical Observatory for and on behalf of the National Aeronautics Space Administration under contract NAS8-03060. Observations were also made at the ESO Paranal Observatory with the VLT under programme ID 079.D-0537(A). Moreover this research has made use of the *Bag of Stellar Tracks and Isochrones* (BaSTI) database and of the Washington Double Star Catalog maintained at the U.S. Naval Observatory.

References

Aurière, M., Wade, G. A., Silvester, J., et al. 2007, *A&A*, 475, 1053
 Babel, J. & Montmerle, T. 1997, *A&A*, 323, 121

Balmforth, N. J., Cunha, M. S., Dolez, N., Gough, D. O., & Vauclair, S. 2001, *MNRAS*, 323, 362
 Borra, E. F., Landstreet, J. D., & Mestel, L. 1982, *ARA&A*, 20, 191
 Bychkov, V. D., Bychkova, L. V., & Madej, J. 2006, *MNRAS*, 365, 585
 Christensen-Dalsgaard, J. 2000, *ASPC*, 210, 187
 Cowley, C. R., Bidelman, W. P., Hubrig, S., Mathys, G., & Bord, D. J. 2004, *A&A*, 419, 1087
 Cowley, C. R. & Rice, J. B. 1981, *Nature*, 294, 636
 Drake, S. A., Linsky, J. L., Schmitt, J. H. M. M., & Rosso, C. 1994, *ApJ*, 420, 387
 ESA. 1997, *ESA-SP 1200*, 122, 3466
 Fivet, V., Quinet, P., Biémont, É., et al. 2007, *MNRAS*, 380, 771
 Freeman, P. E., Kashyap, V., Rosner, R., & Lamb, D. Q. 2002, *ApJS*, 138, 185
 Goriely, S. 2007, *A&A*, 466, 619
 Hubrig, S., Kharchenko, N., Mathys, G., & North, P. 2000, *A&A*, 355, 1031
 Hubrig, S., North, P., & Schöller, M. 2007, *Astronomische Nachrichten*, 328, 475
 Hudson, H. & Ryan, J. 1995, *ARA&A*, 33, 239
 Kenyon, S. J. & Hartmann, L. 1995, *ApJS*, 101, 117
 Kurtz, D. W. 1982, *MNRAS*, 200, 503
 Mason, B. D., Wycoff, G. L., Hartkopf, W. I., Douglass, G. G., & Worley, C. E. 2001, *AJ*, 122, 3466
 Michaud, G. & Charland, Y. 1986, *ApJ*, 311, 326
 Perraut, K., Brandão, I., Mourard, D., et al. 2011, *A&A*, 526, A89
 Perryman, M. A. C., Lindegren, L., Kovalevsky, J., et al. 1997, *A&A*, 323, L49
 Pietrinferni, A., Cassisi, S., Salaris, M., & Castelli, F. 2004, *ApJ*, 612, 168
 Pizzolato, N., Maggio, A., Micela, G., Sciortino, S., & Ventura, P. 2003, *A&A*, 397, 147
 Preibisch, T. & Feigelson, E. D. 2005, *ApJS*, 160, 390
 Rice, J. B. 1988, *A&A*, 199, 299
 Robrade, J. & Schmitt, J. H. M. M. 2009, *A&A*, 497, 511
 Schaller, G., Schaerer, D., Meynet, G., & Maeder, A. 1992, *A&AS*, 96, 269
 Schmitt, J. H. M. M. 1997, *A&A*, 318, 215
 Schmitt, J. H. M. M., Collura, A., Sciortino, S., et al. 1990, *ApJ*, 365, 704
 Schmitt, J. H. M. M., Golub, L., Harnden, Jr., F. R., et al. 1985, *ApJ*, 290, 307
 Schöller, M., Correia, S., Hubrig, S., & Ageorges, N. 2010, *A&A*, 522, A85
 Seggewiss, W. 1990, *A&A*, 229, 186
 Shore, S. N., Brown, D. N., Sonneborn, G., & Gibson, D. M. 1987, *A&A*, 182, 285
 Simon, T., Landsman, W. B., & Gilliland, R. L. 1994, *ApJ*, 428, 319
 Wilms, J., Allen, A., & McCray, R. 2000, *ApJ*, 542, 914